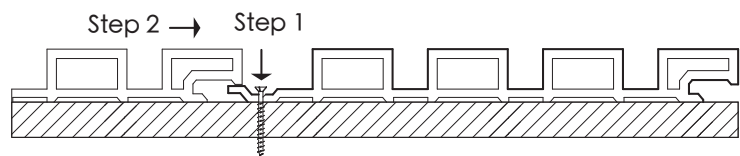
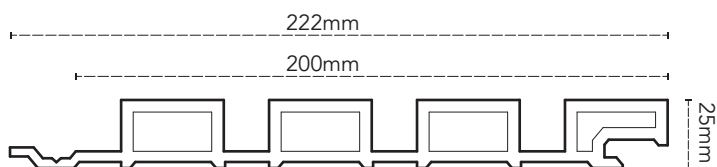


## CASTELLATED CLADDING 'Your stylish home essentials'



Size | 222 x 25 x 5400mm / 4000mm / 2900mm Installation | Batten support & screws



Outer layer: ASA (Acrylonitrile Styrene Acrylate)

Batten Spacing | 400-500mm

25% wood fibre 10% additives



50% PVC

15% calcium carbonate filler

- ✓ Fully capped UV shield & no fading
- ✓ Upgraded profile with wider fixing tongue
- ✓ No maintenance
- ✓ Use indoor & outdoor
- ✓ Screw-hidden system
- ✓ Easy installation

### Test Water Absorption and Thickness Swelling

Method	ASTM D1037-12(R2020) Clause 23
Result	Swelling in thickness 0% Water absorption 1.8%

### Test Thermal Expansion

Method	ISO 11359-2:2021 Method A Temperature -20° C ~ 80° C Rate of Temperature 5° C/min
Result	54 × 10 <sup>-6</sup> K <sup>-1</sup> 0.000054 times every +1° C